

الوسيط الشامل



Universal Mediator



**UNIVERSAL MEDIATORS
CONSTRUCTION CO.**

INDEX

INTRODUCTION

QA/QC POLICY& MANAGEMENT

COMMITMENT

HEALTH SAFETY &ENVIRONMENT

POLICY

OUR MISSION

ORGANIZATION CHART

OUR PROJECTS

TRADING

LIST OF CUSTOMERS

INTRODUCTION

UMCC The name you can trust has come a long way in the Construction and Trading industry since 2003. UMCC is a national firm specialized in the fields of Civil, Electro-mechanical works, HVAC, Plumbing, Fire Fighting, Electrical, Fire Alarm System complete Supply & Installation, Renovation works, Irrigation system, Landscaping works, Roads and High-rise Building Construction, in addition to construction we also provide Trading and Manpower Supply services with its head office located in Jeddah, Saudi Arabia.

Our experience speaks in the execution of the projects. We have worked in mixed terrains and have created a benchmark of our own. Showing a difference in the working style and preparing ourselves for any kind of challenges makes us unique in the field. We rate ourselves with our accomplishments the projects we acquire.

UMCC had participated with some of the most visible and well-known companies in Saudi Arabia in execution of their major projects such as School Projects, Residential and Commercial Complexes, Road & Culverts construction, Rest houses, Irrigation and Landscaping designing and execution, Installation of Fire Fighting and Fire Alarm Systems.

UMCC has served several clients in their construction needs, maintenance, technical support and services. We have more than 100 employees of various professions, who are delivering their best services to the clients in all fields of building construction.

UMCC through its rich resources coupled with the financial strength, effective operational system, extensive experience in the field of construction and engineering as well as high quality technical and managerial staff, UMCC understands all challenges posed by new projects regardless of the size or complexity of the project.

UMCC outstanding achievements in the construction field were achieved through the relentless efforts provided by our highly qualified work force that are continuously improving to offer our clients with top quality support and services.

Continuous upgradation and improvement in its operation/ execution systems, equipments, information technology system and management control system is another commitment of UMCC to maximize the efficiency for successful and satisfactory completion of projects in both schedule and budget.



QA/QC POLICY AND MANAGEMENT COMMITMENT

It is our mission to become a quality professional and committed to providing maximum customer satisfaction. Utilizing our capabilities to provide innovative quality solutions, we shall be the lowest cost provider of services in the market.

The management of UMCC understands the high cost associated with the delivery of a product or service that does not conform to the requirement, in today's highly competitive market. UMCC has adopted the policy of "Do it right the first time". UMCC is committed to providing consistently good quality services in order to establish a strong relationship with the clients and to enhance company's reputation. With this in mind, UMCC has adopted a quality standard based on the International quality management system.

UMCC's quality policy aims to achieve total customer satisfaction and expectations at an acceptable standard. It is the company policy to provide all customers with services that meet or exceeds the contractual and applicable regulatory requirements.

To this effect, UMCC has developed its comprehensive Quality manual, which guides each project site in developing its own specific quality document. Since every project is unique, the quality management system requires that each project have its own quality plan. These unique quality plans supported by client - approved Inspection Test Plans identify the witness and hold points of the construction processes and records the participation for every test and inspection.

Performing large scale and complex projects requires maintaining the highest standards of quality. Our organizations quality program had built on these principles:

- | | |
|------------------------|---|
| Quality People | Motivated, highly trained personnel committed to their work |
| Quality Process stage. | Fully managed from initial stage & safety planning up to finishing stage. |
| Quality Products | Our work stands the best of time. |
| Quality Relationships | With our customers, our partners, and our community. |

Through internal and external collaboration, we provide the maximum value to customers, a challenging, rewarding, safe environment to our employees. Our Goal is to grow in the industry and lead the nation to progress while becoming our customers' pride.

HEALTH SAFETY & ENVIRONMENT POLICY

UMCC's management is committed and understands that the safety and health of its employees is of paramount importance to it. UMCC is committed to provide and maintain a safe and healthy work environment and to promote safe working practices in its entire operational areas and work execution processes. It is the management's responsibility to safeguard the health and safety of all its employees and personnel within its work area.

UMCC's approach to project safety is simple, that all employees and personnel prioritizes "Safety First". Safety is a team commitment and no one can ensure a safe environment unless all consider SAFETY as a collaborative effort.

UMCC involves everyone in making safety his or her main concern. Through education and careful supervision of employees, UMCC demonstrates to all the numerous benefits of having a safe environment. We are utilizing the most comprehensive and the most modern technology to make safety as clear as possible. Through this methodology, safety awareness becomes comprehensible and everyone becomes responsible for the safety of his or her surroundings.

UMCC is providing incentives and recognition programs that emphasize and rewards to all employees for taking safety seriously.

Success in safety starts at the top and our management is committed in supporting our goal of Zero Accidents through clear communication of our high expectations, provision of the resources necessary to achieve results and follow-up to ensure compliance.

Every project is unique, with the presence of UMCC's on Site Safety Coordinator; we ensure safety compliance inspections on a regular basis, weekly safety meetings, and the issuing of safety notices specific to that site.

At UMCC, we believe that in order to have an effective safety program everyone must be committed to provide leadership. The success of the project could be ensured through communication and technology, and we continuously strive to achieve that goal.

It is the duty of UMCC's management to ensure adequate staff, funds, materials and resources are available to meet the safety requirements at all times.

OUR MISSION

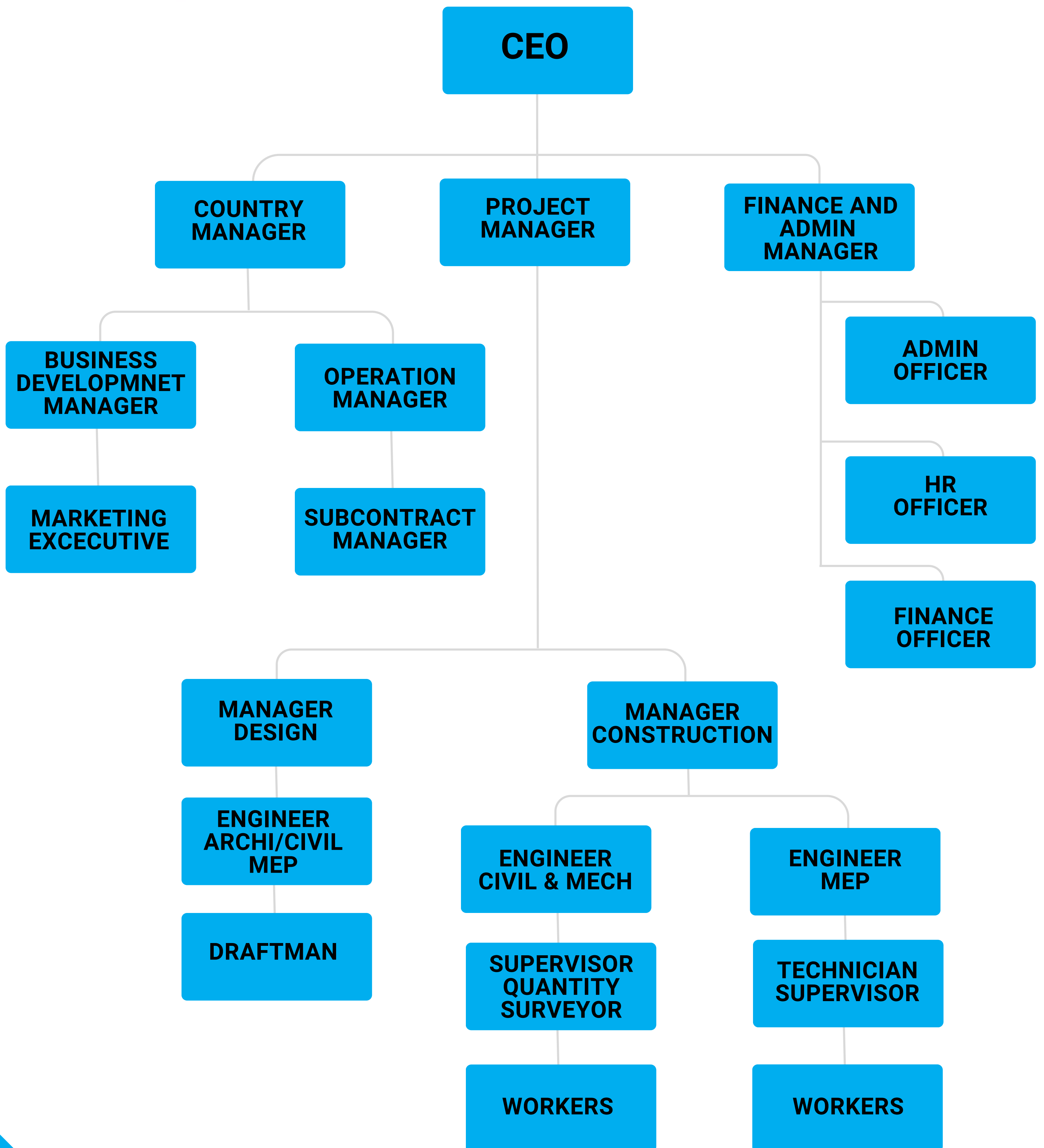
UMCC's mission is to maintain the highest levels of professionalism, integrity and honesty in our relationship with our stakeholders with quality engineering and world-class services.

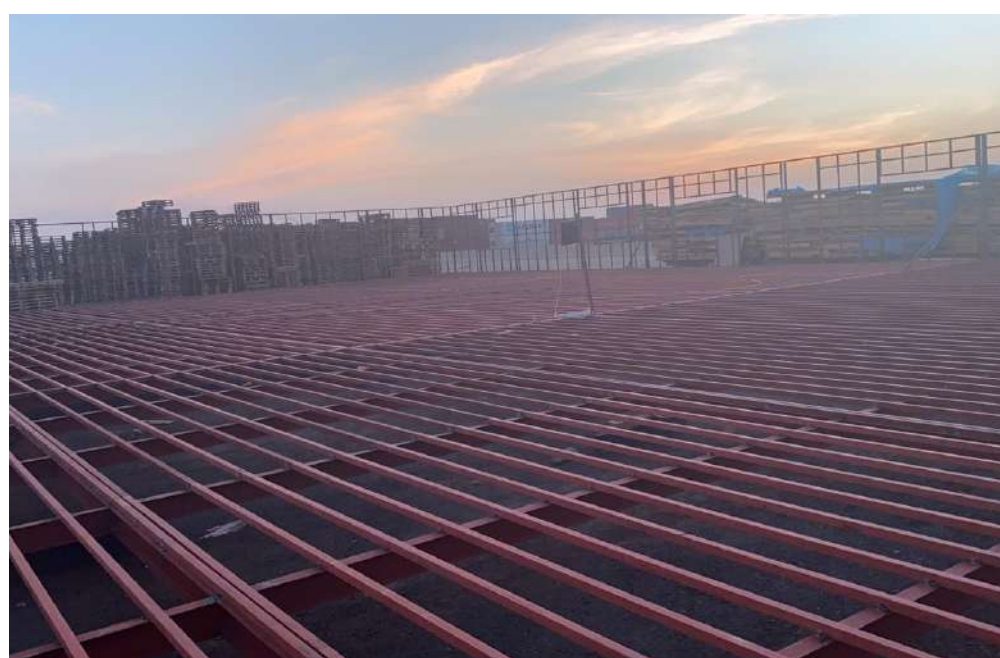
We also believe in client satisfaction and achieving their targets on time with safety and quality as primary measures.

UMCC, based and operating in Saudi Arabia has its wings spread all over the regions. With our Head office in Jeddah, we have our site offices based at each of our project sites in the region.



Organizational Structure

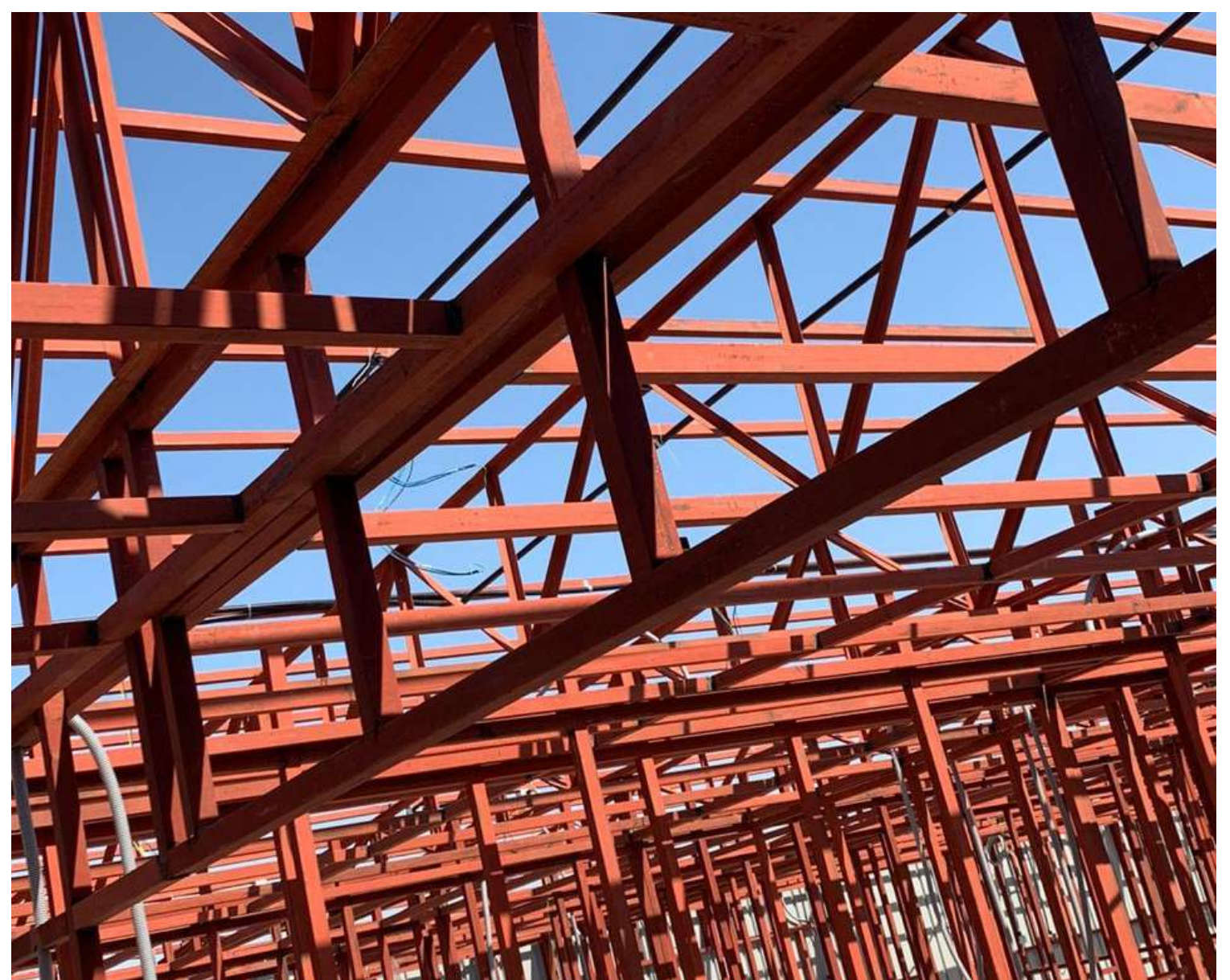




DESIGN & CONSTRUCTION

- CONSULTANT OFFICE BUILDING,
- CONTRACTOR OFFICE BUILDING
- WORKERS BUILDING
- PROJECT FOR AIRPORT CONSTRUCTION. NEOM PROJECT
- PROJECT VALUE 10 MILLIONS
- CONSULTANT: EGIS
- MANPOWER EMPLOYED- 105 PERSON

AMAALA PROJECT





PEB STRUCTURE

- **BRS PROJECT- SWISSPORT**
 - AREA- 1650SQ.M
 - MANPOWER- 35PERSON
- **EZAFCO COLD STORAGES**
 - AREA- 650SQ.M
 - MANPOWER- 35PERSON
- **AMAALA PROJECT**
 - AREA-1850SQ.M
 - 3BUILDINGS
 - MANPOWER- 120PERSONS
- **WEDDING HALLS**
 - AREA- 2500SQ.M
 - MANPOWER-75 PERSONS



COFFEE SHOP

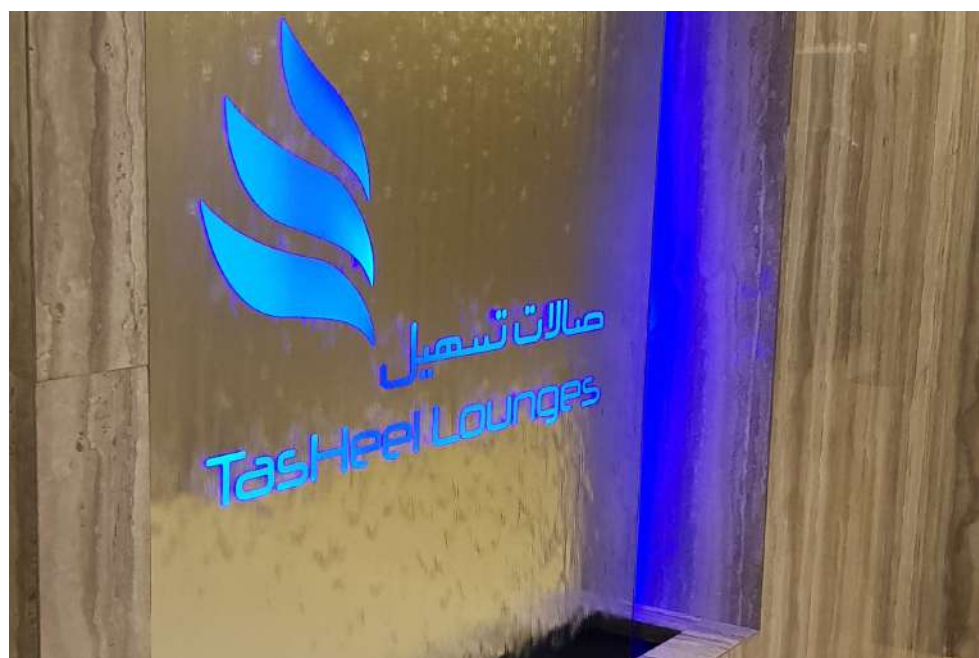


COFFEE SHOPS

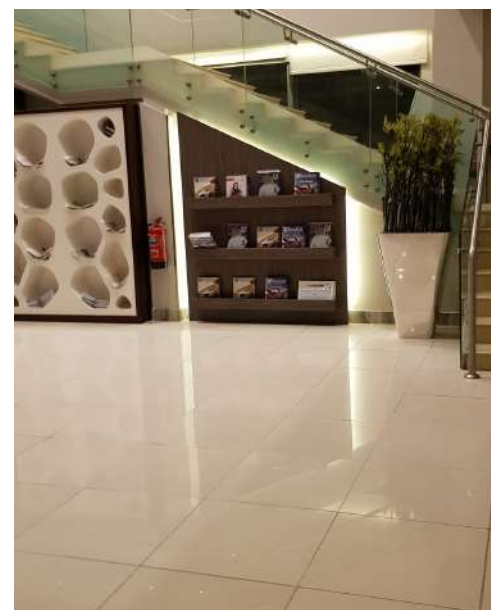
- STEEL STRUCTURE
- GYPSUM BOARD
- MEP WORK
- COUNTERS
- DECOR WORK
- EQUIPEMTNS

PROJECT DETAILS

- AREA: 100M²
- DURATION: 3MONTHS
- DESIGN
- CONSTRUCTION
- MANPOWER
EMPLOYED- 37Person
- VALUE: 650,000SR



TASHEEL LOUNGE- NORTH TERMINAL JEDDAH





KING FAHD INTL AIRPORT- DMM AL MUSAFIR OUTLET PROJECT



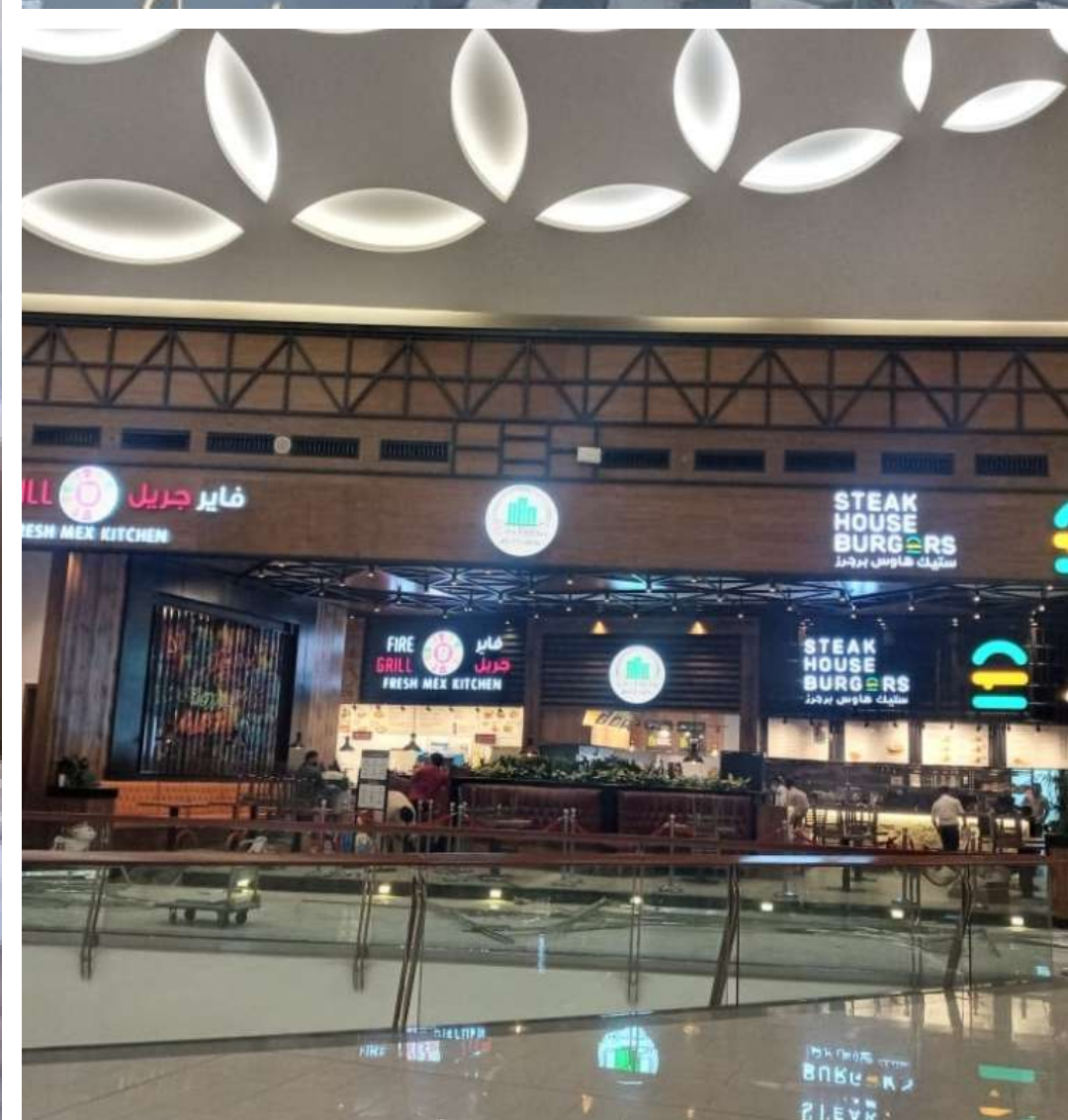
- STEEL STRUCTURE
- GYPSUM BOARD
- MEP WORK
- COUNTERS
- DECOR WORK
- EQUIPEMTNS

- AREA: 100M²
- DURATION: 23 MONTHS
- DESIGN
- CONSTRUCTION
- VALUE: 250,000 SR

INTERIOR PROJECT



UMCC ARCHITECTURAL PROFILE



Universal Mediator

RANGE OF SOLUTIONS
TO YOUR NEEDS

1

MAKAZA

Construction and
building materials

2

APEX

Elevator and
escalator

3

GOLDSIT

Office Furniture's

4

NOVVES

Smoke Control Systems
Comfort Ventilation

5

MONDE DESIGN

A Pioneering Vision in
Caravan Design and
Manufacturing

6

NIVA

Air Curtaining for Air
Conditioned Area



At UMCC, our core business that specializes in the design, planning and construction of buildings and other structures. We provide a wide range of services, which may include:

Architectural Design: UMCC is specialized in creating the conceptual and technical plans for a building or structure. Architects work closely with clients to understand their needs and preferences and develop design solutions that meet functional, aesthetic, and regulatory requirements.

Project Management: UMCC is offering project management services to oversee the construction process. This can involve coordinating with contractors, managing budgets and timelines, and ensuring that the project is executed according to the design plans.

Interior Design: UMCC also provide interior design services, focusing on creating functional and aesthetically pleasing interior spaces. This includes selecting materials, finishes, furnishings, and lighting that align with the overall design concept.

Urban Planning: UMCC is involved in the development and design of cities, towns, and communities. Architecture firms may be involved in creating master plans, zoning regulations, and strategies for land use and development.

Sustainability and Green Design: With a growing focus on environmental sustainability, UMCC offers expertise in sustainable design practices. This can include incorporating energy- efficient systems, using eco-friendly materials, and designing buildings that minimize their environmental impact.

Renovation and Restoration: UMCC is specialized in the renovation or restoration of existing buildings. This can involve preserving historical features while updating the structure to meet modern standards and requirements.

LIST OF CUSTOMERS

1. • **Al-Futtaim Engineering & Technologies**
2. • **Fosam - Fosroc company**
3. • **Tasheel Modern services co.**
4. • **Seera group.**
5. • **Medical Refrence Clinics**
6. • **Accor Group of Hotels.**
7. • **Makkah hotels and residencies.**
8. • **Hilton hotel**
9. • **Saudi Binladin Group**
10. • **Aujan GroupHolding**
11. • **Arabian BEMCO**
12. • **Sleep High Global Marketing**
13. • **Dammam University**
14. • **Zuhair FayezPartnership**
15. • **Amnest Group**
16. • **Ghassan HoldingGroup**
17. • **Al Zahrani Partners**
18. • **Al Falak**
19. • **Al HarbyTelecom**
20. • **Electronic Vision(e-vision)**
21. • **Al Fanar**
22. • **SEDCO**
23. • **Petrochemical Conversion Company Ltd.**
24. • **PROMECH (Zamil)**
25. • **Bifal HeavyIndustries Ltd.**
26. • **Al Yacht Marketing**
27. • **Al Zamil Steel Industries**
28. • **ELAF Toursand Travels**
29. • **Al – Fara’a Arabia Contracting Company**
30. • **Techno Track**
31. • **Al HaddadEngineering Consultant**
32. • **AMBAH Holding Group**
33. • **Satco**
34. • **ELAJ Group**
35. • **Al Nahdi Medical Company**
36. • **Azmeel Contracting Company**
37. • **Samara TradingGroup**
38. • **Al Kifah Contracting Company**
39. • **First Saudi Contracting Company**

UNIVERSAL MEDIATORS CONSTRUCTION CO.

Head Office – Jeddah
Kingdom of Saudi Arabia

+966 (0) 12 667 8001 

info@um-cc.com 

www.um-cc.com 